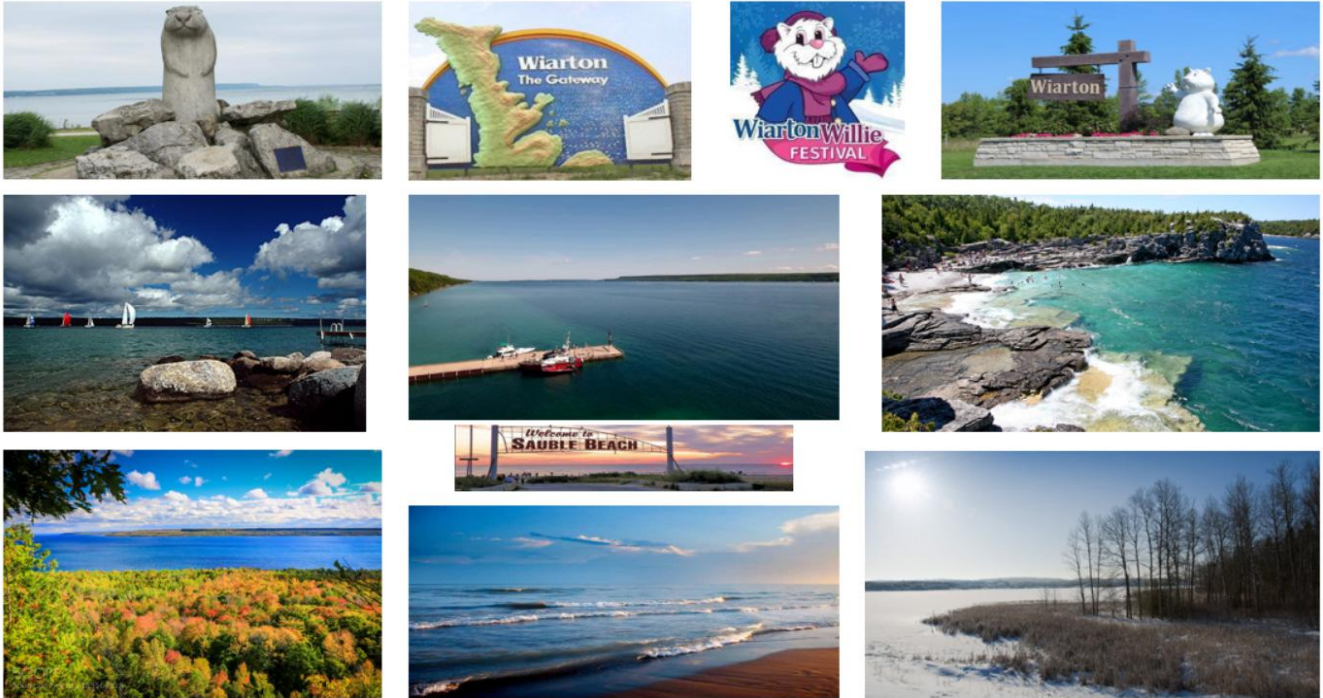


Welcome to
The Rich-Haven Waterfront Country House
at Colpoys Bay, South Bruce Peninsula!



For more information and to book your stay directly with us visit our website at:

www.provizona.com/colpoys

You may also book your stay at the at any of the following booking sites:

<https://www.airbnb.ca/rooms/30157605>



<https://www.vrbo.com/en-ca/cottage-rental/p7458050>



<https://www.flipkey.com/properties/9947930/>



For more information on the Bruce Peninsula, visit the following websites:

<http://thebrucepeninsula.com>

<https://explorethebruce.com>

<http://www.brucepeninsula.org>

Exterior Property Views



The ***Rich-Haven*** country house is a waterfront property perched on the escarpment overlooking stony **Mallory Beach** just north of the Town of **Warton** at **Colpoys Bay** on the **Bruce Peninsula** between **Lake Huron** and **Georgian Bay**. The town has a population of 2,300. The house is located only 20 minutes drive from the popular beach resort town of **Sauble Beach**.

Warton sits squarely at the head of the long gash in the **Niagara Escarpment** known as **Colpoys Bay**. It is named after Warton Place in Maidstone, Kent, the birthplace of the Governor General of Canada during the 1850's when **Warton** was first settled. The long jutting headlands make sailing, canoeing or kayaking the Bay a protected but magnificent experience, especially with the three islands -- Griffith, Hay and Whitecloud -- looking like a necklace separating Colpoys from Georgian Bay.

The Rich-Haven Waterfront Country House

Mallory Beach Road, Wiarton, ON N0H 2T0 email:colpoys@provizona.com tele:(416) 671 0223

Thank you for choosing ***The Rich-Haven*** for your holiday getaway. The house and well maintained property with its gorgeous bay views has been in our family for over 30 years and we hope you will enjoy it as much as we do!

In this booklet you will find information about the property and its amenities , the grocery stores, fine fish and butcher shops in town, as well as all the endless excursions for any season of the year!

If during your stay, you notice anything that needs improvement please let us know by email at the address below. Your comments are appreciated to help us improve the experience for future guests.

Assistance - For immediate assistance on any matter once you have arrived, you may contact Matt Fuchs at 1 (416) 671-0223

Emergencies – If you have an emergency of any kind, always call 911 first.

If you have a non-critical medical situation and you think you are able to reach the hospital, the Wiarton Hospital is located 10 minutes away at 369 Mary Street, Wiarton, Ontario. Tele: (519) 534 – 1260.

For more information, feedback and suggestions...

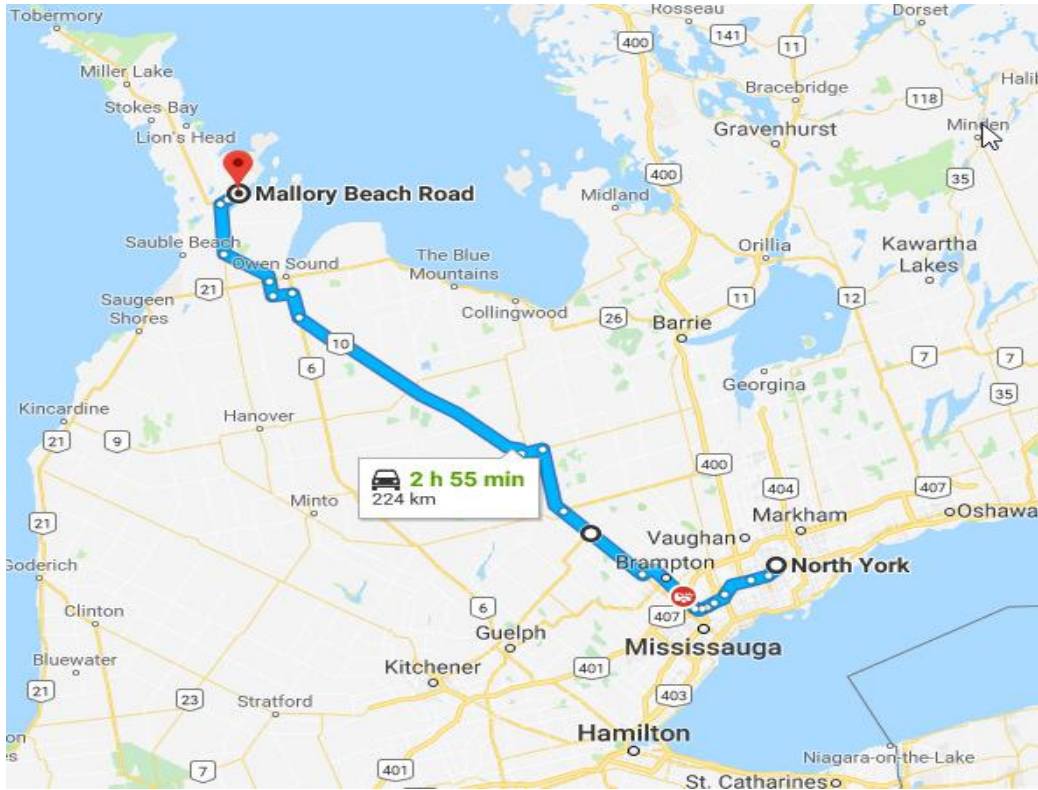
Visit our website at: www.provizona.com/colpoys

Or contact us at: colpoys@provizona.com

BOOKLET SECTIONS

	Page
1. Directions	4
2. Guidelines of the property	5
3. Recommended Local Stores	7
4. Local Outfitters and Equipment Rentals	9
5. Activities - Winter	10
• Cross-Country Skiing and Snow Shoeing	10
• Ice-Skating and Tobogganing	12
• Horse Drawn Sleigh Rides	13
• Festival of Northern Lights, Winter Festival	14
• Snow-Moiling	16
6. Activities - Spring Through Fall	
• Hiking, Bird Watching	18
• Scenic Road Cycling-Tours, Mountain Biking	21
• Boating, Paddling and Water Sports, Scuba Diving, Fishing, Summer Beaching	24
• Golfing, Municipal Facilities – Tennis, Swimming Pool, Waterfront Park	27
• Fall Colours Tour, Other Activities	28

1 - Directions From Toronto



2 h 55 min (224 km)



via ON-10

2 h 41 min without traffic

North York

Toronto, ON

- > Get on ON-401 W from Yonge St
4 min (1.4 km)
- > Continue on ON-401 W. Take ON-410 N, Hurontario St, ON-10 and ON-6 N to Bruce County Rd 9 in South Bruce Peninsula
2 h 41 min (217 km)
- > Drive to Mallory Beach Rd
8 min (5.9 km)

Mallory Beach Rd

South Bruce Peninsula, ON N0H 2T0

2 - Home and Property Guide

During your stay, please treat **The Rich-Haven Country House** as if it was yours. The following are common sense guidelines.

1. **Cleanliness** – We use a professional cleaning service for the satisfaction of our guests. The cleaning fee is already included in your rate.

Our crew thoroughly cleans the house, washes and changes towels and linens between guests. In order to make sure they clean all that's needed, before you leave, please assist them by:

- ✓ **Towels:** Leaving all the used towels in the bathroom shower or tub so that our staff knows that they need to be washed (just like you would do in a hotel).
- ✓ **Kitchen/Dishes:** Putting all the unclean dishes in the dishwasher
- ✓ **Garbage:** Discarding garbage bags and recyclables and in the metal bin at the end of the driveway.

2. **Entertainment/Technology:**

- **Wi-Fi:** The modem is physically located in the dining room in case you need to reboot:
 - Wifi Name: Colpoys (and its extenders)
 - Wifi Password: p0g0p0g0 (for Wifi Colpoys and its extenders)
- **TV:** Two Smart TVs give you access to the login screens of your favorite subscription channels using your credentials. TVs have HDMI for connecting to gaming consoles that you bring.
- **Stereo** – Connect your music source device through the available auxiliary cord

3. **Where is everything, and how do I use it?!**

Kitchen:

- ✓ **First Aid Kit:** You will find the first aid kit in the **kitchen closet** right next to the garbage bin (beside the stove).



- ✓ **Stove and Oven:** **Very important** as this is a gas stove and not electrical.

- i. When turning on the top stove elements, turn each knob all the way to the maximum.
- ii. You will hear the electric sparker making a clicking sound.
- iii. You will see the fire turn on, at which point you can adjust the level of the heat you require.
- iv. **NEVER leave the stove top gas knobs open if they are not lit.**



- v. Contrary to the stove top, the oven uses an electrical ignitor and a thermostat. Simply turn the oven on and wait for the ignitor to heat up for a minute or two. The oven's thermostat controlled gas valve will only open up automatically once the ignitor has reached its required temperature.

- ✓ **Counter:** **Please do not put any hot pots/dishes** (right off the stove or after the oven) onto the counter. Since this is a wooden counter and not granite, the hot plates will damage the counter.
- ✓ **Kitchen Closet:** All the garbage bags (and **napkins**) are in this closet as well.
- ✓ **Coffee:** Coffee filters are kept to the right of the coffee machine.
- ✓ **Electrical kettle:** The electrical kettle is in the top cabinet of a closet to the right of the fridge.



Bathroom:

- ✓ **Waste Disposal:** The house uses a septic tank waste system. Please do not flush hygienic products other than toilet paper in the toilets.

Smoking areas are outside ONLY:

- ✓ **Ashtrays:** You will see a set of ashtrays in the solarium or on the front porch. Please use them **outside only** and then before you leave kindly wash them and place them back.



Washer/Dryer: If you need to use the washing machine, you will find all the necessities in the laundry room (right next to the guest washroom).

- ✓ **Washing machine:** **Before you push the 'Start' button, you will need to make sure the water intake knobs behind the machine are turned on!**

Outdoor BBQs:

- ✓ **Operation:** There is a standard propane BBQ at the side of the house. Additional propane tanks are also stored in the wood shed. Please cover the BBQ when not in use.

Outdoor Fire Pit:

- ✓ **Outdoor firewood:** Outdoor firewood quantities and kindling you may need can be purchased for delivery by calling **Kelly Helier Firewood at 519 372 6812** in advance. They may also be purchased and picked up at the local Foodland grocery store and Home Hardware store in the town of Wiarton.
- ✓ **Fire pit:** In the summer the fire pit is located beside the house by the picnic table. In the winter, due to snow accumulation, the fire pit is stored in the wood shed beside the house. When finished please place extinguished ashes in the ash bin. Before you leave, please cover and place the fire pit and ash bin back to their original locations.

Indoor Fireplace:

- ✓ Indoor firewood: Dry firewood for the fireplace is located in the back porch
- ✓ Fireplace operation:



Widen the levers outwards to provide more draft intake when starting the fire. For a long lasting, safe and even burning fire, narrow the levers inward to reduce draft intake once the fire has been started. It is not good to overheat a fire by maintaining the draft intake at its highest setting.

The heat out take nob determines how much heat you want directed into the room. The higher the setting the more the room will warm up.

To start the fire place crumpled starter paper (found in a wooden box beside the couch) in the fire place. Then place kindling wood in a grid position and light the paper in multiple locations.

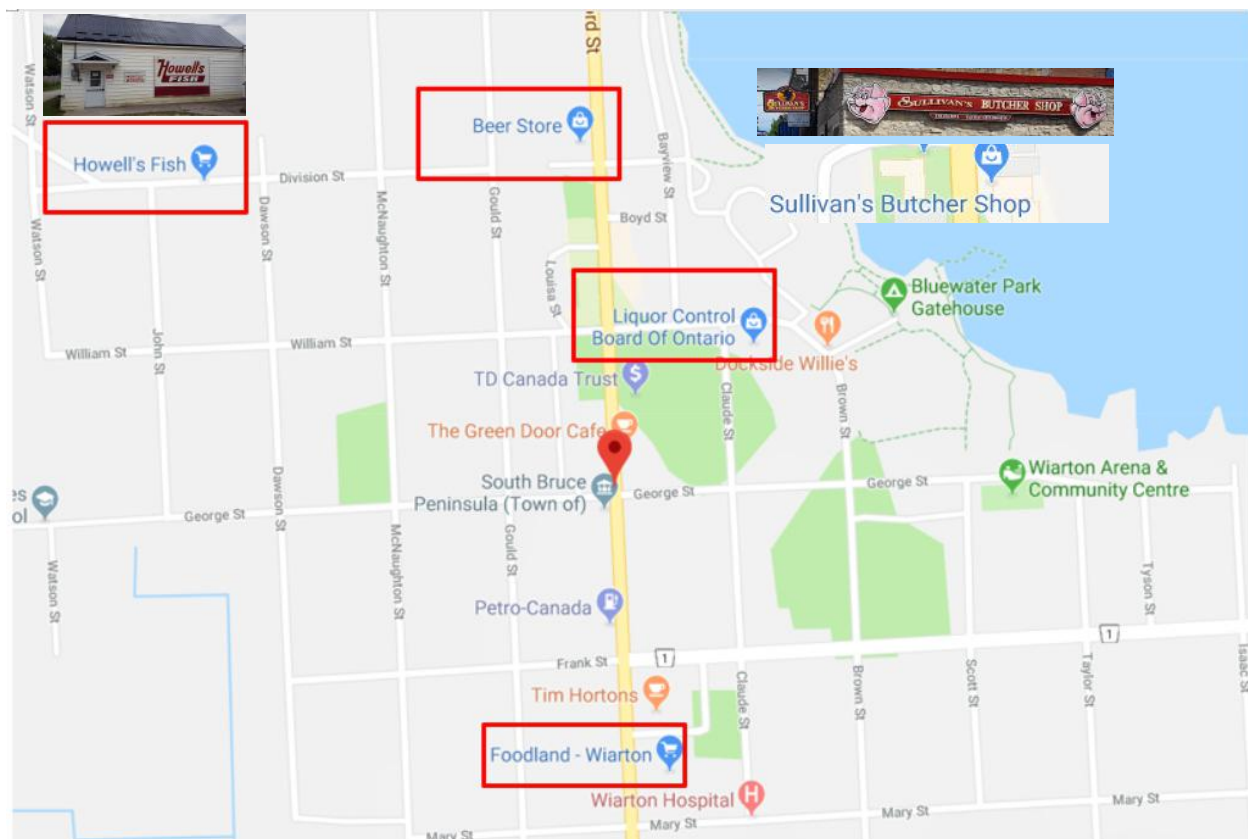


Gradually add larger pieces of log wood until the fire is satisfactory. Then narrow the draft intake levers inward for a safe and long lasting fire. Note that a glass cleaning handled razor should be found on the mantle and glass cleaner under the kitchen sink. When finished, remove extinguished ashes into the ash bin and store safely outside. Additional kindling and starter paper can be purchased at the local Foodland or Home Hardware stores.

3 - Recommended Local Stores

Nearby (Warton, ON ~ 10-minute drive):

- **Foodland** – 24-hour grocery store (hours may vary during holidays)
425 Berford St, Warton, ON N0H 2T0
- **LCBO**
415 William St, Warton, ON N0H 2T0
- **The Beer Store**
690 Berford St, Warton, ON N0H 2T0
- **Howell's Fish** – the freshest fish you will ever have! From your selection of local salmon, trout, white fish and more. Be sure to ask about their stuffed (frozen) white fish and smoked fish. 153 Division St, Warton, ON N0H 2T0; tel (519) 534-0850
- **Sullivan's Butcher Shop** - wide choice of top cuts and 14 different homemade sausages, own smoked honey & garlic, pepperoni and new ones coming, homemade venison salami, homemade kolbassa, homemade bologna and dressed back luncheon meats, store made smoked pork chops, homemade meat pies (4 kinds), lasagnas (3 kinds), cabbage rolls, shepherd's pie. 641 Berford St, Warton, ON N0H 2T0; tele (519) 534-3074



... Recommended Local Stores (continued)

A bit further (Owen Sound, ON ~ 30-minute drive):

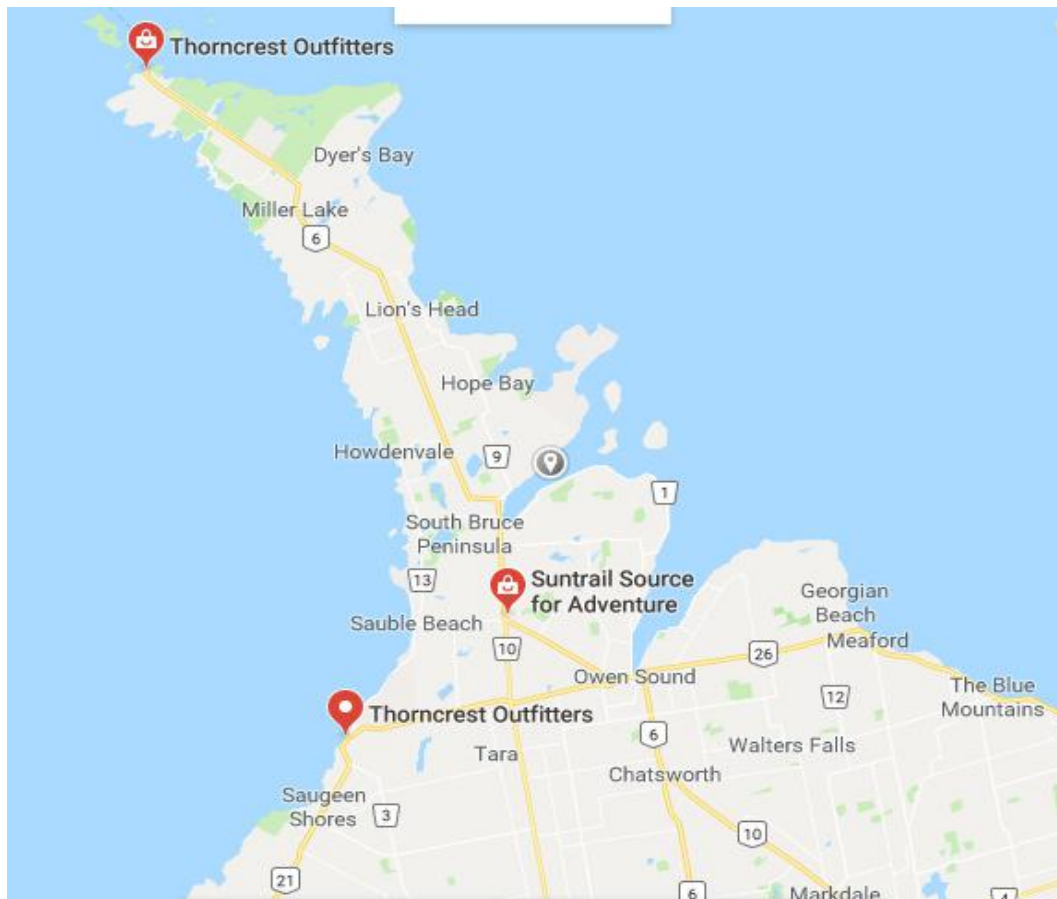
- **Metro:** 1070 2nd Ave E, Owen Sound, ON N4K 2H7
Tip: It's a bit cheaper than Foodland, plus it has more variety of herbs
- **Walmart:** 1555 18th Ave E, Owen Sound, ON N4K 6Y3
- **Canadian Tire:** 1605 16th St E, Owen Sound, ON N4K 5N3
- And plenty of others



4 - Local Outfitters for Equipment Rental

Gear rental such as kayak, canoes, ski equipment and snowshoes are available at *Suntrail Source for Adventure* and *Thorncrest Outfitters*. Phone ahead of time to reserve the gear you need during your stay!!!

- *Suntrail Source for Adventure* (www.suntrail.net) (519) 935 2478 is located at 100 Spencer Street, Hepworth, ON, N0H 2T0
- *Thorncrest Outfitters* (www.thorncrestoutfitters.com) (519) 797 1608 is located at 193 High St, Southampton, ON N0H 2L0



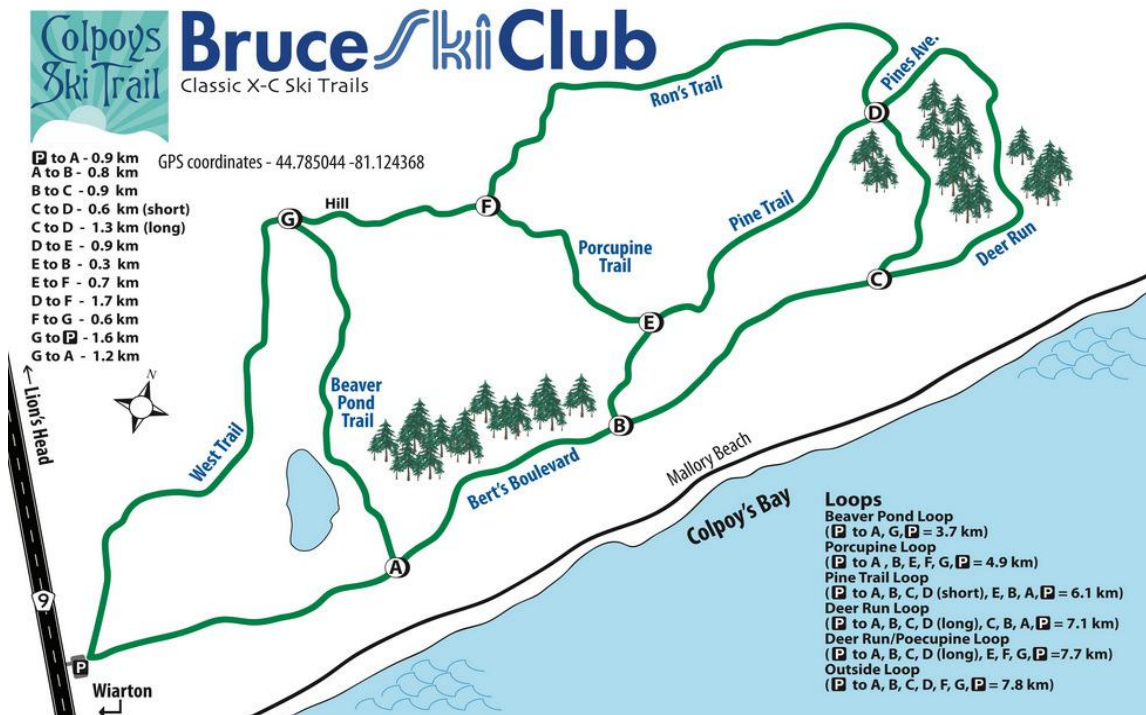
Bruce Outfitters is another option if you need canoes or Kayaks delivered to the property. You may reach them at (416) 830-4715 or through their website at <https://bruceoutfitters.com/>

5 - Suggested Activities - Winter [December through March]

Cross-country Skiing and Snowshoeing

The Colpoys Ski Trails run just behind the property on top of the escarpment and is operated by The Bruce Ski Club that runs some of the most affordable, accessible and best maintained cross-country ski trails in southern Ontario. See <http://bruceskiclub.ca> for more information.

1. The **Colpoys Cross-country Ski Trails** offer 11.5 kilometers of well groomed trails that run from the Bruce Trail just behind the property on top of the escarpment. They run through gently rolling, sheltered woods and open fields. Several places offer great views across the bay. Trails are groomed and trackset as often as possible, depending on the weather and conditions.
2. The **Sawmill Centre** is located in Hepworth, It offers both nordic skiing and snowshowing trails. The trails are cut through rolling land, sheltered by hardwood and evergreen stands. All ski trails are packed, groomed, and trackset on a regular basis. Sawmill Nordic Centre includes: 11 kilometers of cross-country ski trails, groomed for both classic and skate skiing and 5 kilometers of snowshoe trails.





Ice-Skating and Tobogganing

For more info see : <https://www.visitgrey.ca/play/outdoor-activities/ice-skating>

Indoor skating is available at the local Town of Wiarton Arena. Call (519) 534 2891 for schedules.



Outdoor skating is available at Owen Sounds Harrison Park that straddles the scenic Sydenham River and features beautiful landscapes and century-old trees and is open from 9AM to 9PM. Call Owen Sound Recreation for more information at: 519-376-1440.



The Wiarton **Tobogganing Hill** is located on Berford Street at the southern entrance to the town in front of the hospital.



Horse Drawn Sleigh and Wagon Rides (Available All Year)

Dual Acres Horse Drawn Sleigh and Wagon Rides. Located in nearby Shallow Lake, enjoy a horse drawn sleigh or wagon ride through one of Georgian Bluffs' beautiful woodlots during winter, spring, summer or fall. See <http://www.dualacres.com> ; Tele: (519) 935 3156 for more information and bookings.

1. Romantic Rides

Our two-seater sleigh is just right for engagements, anniversaries or just to enjoy with that special person.

2. Group Rides

Whether it's a family gathering or just getting together with friends, let us take your group on a memorable ride through some of the most beautiful wood lot trails in Grey Bruce area. Our sleighs and wagons hold 10-12 adults.



Owen Sound Festival of Northern Lights

Enjoy the amazing light display From SAT. November 17th - Sun. January 6th in downtown Owen Sound. Horse Drawn Wagon Rides are available at this event.

See <http://www.owensoundfestivalofnorthernlights.ca/> for more information.



Warton Willie Winter Festival: First Weekend in February

Nestled against the towering bluffs of the Niagara Escarpment, **Warton** is a thriving four seasons community. Its most famous resident, **Warton Willie**, fuels Warton's international recognition, as part of the **Warton Willie Festival**, which can run as long as 5 days.

Warton Willie hosts national and often international media for his ground hog day prediction.



For more information see: <https://visitwarton.ca/profile/warton-willie-festival/959/>



Warton Willie FESTIVAL

FUN FOR THE WHOLE FAMILY

February 1, 2018: 5pm-9pm
Rest Up for Willie PJ Party
The Meeting Place, Warton

February 2-3, 2018: 12pm-4pm
Snow Snake, Hockey Shootout,
Horse Drawn Sleigh Rides, Skating,
Snow Art, Snowman Building Contest,
and Much More!
Bluewater Park, Warton

CHECK US OUT AT
FACEBOOK.COM/WIARTONWILLIE



Snowmobiling

Ontario Federation of Snowmobiling Clubs (OFCS) Trail B107 is part of the New Bruce Peninsula Tour and runs a few hundred meters behind the property with access on Bruce Road 9. You can snowmobile to the trail from the house and the property has plenty of space to park your snowmobiles!

To plan your Bruce Peninsula snowmobiling tour, contact the websites below:

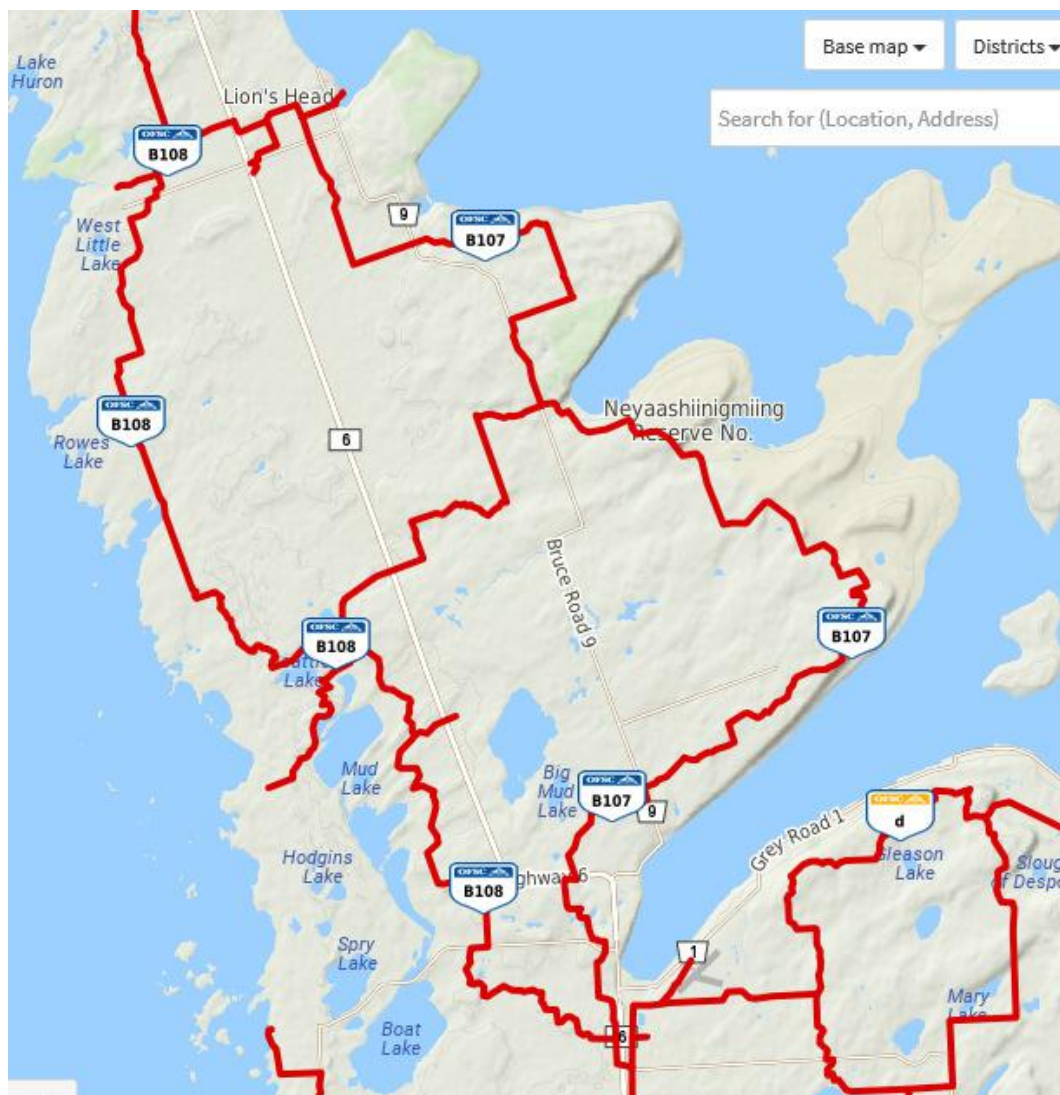
Ontario Federation of Snowmobiling clubs:

<https://www.ofsc.on.ca/experience/get-started/permits>

District 9 Clubs:

<http://www.ofscdistrict9.ca/clubs> email: manager@ofscdistrict9.ca

See South Bruce Peninsula Trail Maps: <https://trails.evouala.com/ofsc/>



.... Snowmobiling (continued)



6 - Suggested Activities in Spring, Summer and Fall [April through November]

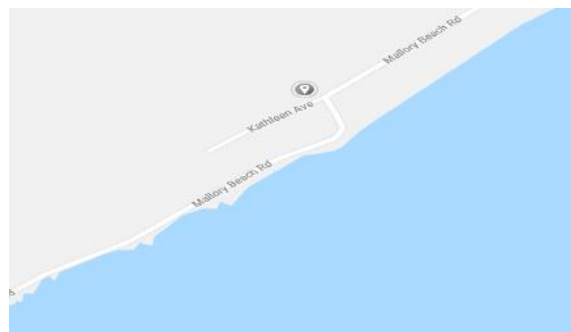
Hiking

The **Bruce Trail** stretches from the Niagara Region all the way up to Tobermory, but the trail from Wiarton to Tobermory in the UNESCO world biosphere reserve is some of the best hiking you will find anywhere! Escarpment views of the clear-blue waters of Georgian Bay, caves, rock formations and extraordinary scenery make Bruce Peninsula one of Ontario's must-see places.

The Colpoys Bay portion of the **Bruce Trail** runs just behind the property.



It can be easily accessed from the Colpoys Bay Trail Head off RR9 near the start of Mallory Beach Road. It can also be accessed at the very nearby 'S' curve located where where Mallory Beach Road meets Kathleen Ave.



...Hiking (continued)

For more information and to plan your hike visit any of the following sites:

- 1) <https://explorethebruce.com/things-to-do/bruce-trail/>
- 2) <https://www.pbtc.ca/>
- 3) <https://brucetrail.org/pages/trail/using-the-trail>
- 4) <https://www.torontobrucetrailclub.org/>



Bird Watching (Birding)

The Bruce Peninsula is a bird watchers paradise. Some of Ontario's rarest birds can be found here including the Bald Eagle, Golden Eagle, Whip-or-Will, Great Blue Heron, Snowy Owl, Plover and many many more. Browse www.visitbrucepeninsula.ca/things-to-do/birding and check out the trails for great places to set up for your birding experience.



Scenic Road Cycling Tours

Bruce County's country roads lend themselves naturally and beautifully to cycle touring. They're quiet, well surfaced, and jam-packed with diversity. You can cycle from sandy beaches in the west to rocky cliffs in the east. Roads climb up and over the Niagara Escarpment and run along some of Canada's most stunning shoreline. The property provides an perfect starting/ending point to any of the following tours.



...Scenic Road Cycling Tours (Continued)

For more information and to plan your cycling tour visit:

<http://www.brucepeninsula.org/cycling> or <https://explorethebruce.com/routes/cycling-tours/5/>



Beaches North Tour



Best of Bays Tour



Escarpment Tour



Coast to Coast Tour

Mountain Biking Trails

The **Bruce Peninsula Mounting Biking Adventure Park** (661 Bruce Road 9, Wiarton NOH 2T0 tele - 1 800-268-3838) is located minutes north of the property off Bruce Road 9, the **Mountain Bike Adventure Park** provides riders with over 15km of both double and single track trails. Local riders consider the MTB Park one of the most challenging trail properties within the County of Bruce. Rocky outcrops, armoured tread sections, wicked rock features and newly created family friendly loops put this property high on the “to-do-list” of MTB riders. **For more information and to plan your Mountain Biking Adventure visit: <http://www.mtbthebruce.com/trails/adventure-park.php>**



Boating, Paddling and Water Sports [May through October]

Surrounded by Lake Huron and Georgian Bay, Colpoys Bay is your gateway to a Bruce Peninsula freshwater adventure. Every lakefront community has a marina and every beach has the most beautiful view of the sunrise or sunset. From **Kayaking** to **Canoeing**, to **Paddle Boarding**, to **Kite-boarding**, to **Jet Skiing**, to **Sailing** to **Boating Excursions**, to **Fishing**, to **Snorkelling**, to **Scuba Diving**.

The possibilities are endless! To plan your water adventure visit:

<https://explorethebruce.com/explore/boating-and-paddling-in-bruce-county/91/>

<https://explorethebruce.com/things-to-do/boating-water-sports/>



For Guided Boat Tours, call Bruce Peninsula Boat Tours at (519) 372 – 6309 or visit their website:

<https://brucepeninsulaboattours.com/>

For information on Scuba Diving and Snorkelling options visit:

<https://explorethebruce.com/explore/scuba-diving-and-snorkeling/59/>

Colpoys Bay Fishing [During Open Season for the Given Species]

In Colpoys bay you can find all the varieties of fish found in Georgian Bay, especially Lake Salmon, Lake/Rainbow Trout, White Fish and Bass. You may launch your boat at the Warton Public Harbour Boat Launch or Shore Fish from the nearby pier conveniently located where Mallory Beach Road meets RR9, just 2 Km from the property. For fishing regulations and licensing visit:

<https://www.ontario.ca/document/ontario-fishing-regulations-summary>



Independent Guided Fishing Trip Operators:

- 1) Ken Marshall at 1 (705) 716-6445
- 2) <http://www.fishingaction.com>
- 3) <https://www.boscocsa>

Summer Beaches [June through September]

Famous **Sauble Beach** is only 20 minutes away, but with over 2,400km of Great Lakes shoreline, its no surprise Bruce County is home to many beaches with pristine white sand. Looking for more than your usual sandy white beaches? Lake Huron to the west and Georgian Bay to the east create a unique opportunity to see and explore a large variety of beaches within close proximity yet with very diverse landscapes and shorelines. Bring your swim shoes so you can enjoy all the water scapes!

For a guide to Bruce County's countless beaches visit:

<https://explorethebruce.com/things-to-do/beaches/>



Golfing [April through October]

The Warton Golf Club offers a very scenic course that is backed by the Niagara Escarpment and overlooks Colpoys Bay with an Escarpment Cliffs View. Each year new golfer are tested by our challenging 9 holes of golf.

<http://wartongolfclub.com/>



Town of Warton Municipal Facilities [April through October]

Inquire into a host **Warton Blue Water Lake Front** activities at the municipal facilities such as the Outdoor Heated Swimming Pool, Tennis and Basketball Courts, Baseball Diamond, Children's Park, Picnic Grounds, Municipal Beach etc. at:

<https://www.southbrucepeninsula.com/en/townhall/Facilities.asp>



Fall Colours [September through November]

Autumn is one of the best times to take a trip up the Peninsula. The turquoise waters of Georgian Bay brighten with the diversity of the reds, oranges and yellows in the leaves. Inhale the fresh air of the Lake shore that is made crisper and cooler by the fall. Take a drive in the centre of Bruce County with rolling fields that are surrounded by an amazing palette of vibrant colours, or walk the Bruce Trail at Colpoys Bay and experience the colours up close. Enjoy a photographers dream – Bruce County in the Fall.



For a guide on how to enjoy Bruce Peninsula Fall Colours visit:

<https://explorethebruce.com/mobile/story/explore-the-bruce-in-the-fall-foliage-/182/>

Other Activities

For suggestions on many other activities to do during your Bruce Peninsula Getaway or Holiday at Colpoys Bay, consult the Official Tourism Website of Bruce County, Ontario, Canada:

<https://explorethebruce.com/>